

快装制作要求:

材质:铜版纸**105g**, 折叠

尺寸:展开尺寸**630*297mm**。

折叠方式:先竖向二折(风琴折)再横对折, 折叠后封面(二维码、料号页面)朝上

装订:-

颜色:彩色双面打印(若无标注潘通色号以ai图档为准)

其他:料号后-X, X为供应商缩写

环保要求:满足RoHs和Reach

质量要求:保证印刷清晰, 产品无脏污, 折叠整齐



PANTONE 2645C

料号版本	修改内容/ECN号	制作人	日期
00	初版快装	陈成	2026/04/01

Quick Installation Guide (Stackable AIO)

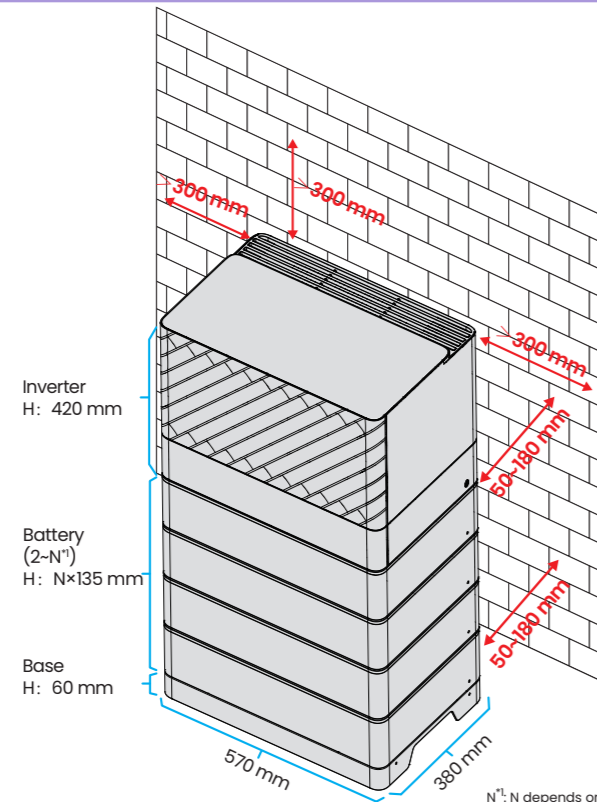
V 1.0.0
10-203-00764-00-X

Content

- 1. Packing List
- 2. Installation Procedure
- 3. System Diagram
- 4. Grounding Connection
- 5. PV Connection
- 6. AC Connection
- 7. BACKUP Connection
- 8. RJ45 Connection
- 9. COM Connection
- 10. System Commissioning

Inverter	Battery Series	Battery No.
Inverter	EQ4800-S	2-9
	EQ5500-S	
	EQ3300-S	
	EQ3300-S (w)	2-6
	EQ5000-S	
	EQ5000-S (w)	
Inverter	TQ4800-S	2-9
	TQ5500-S	
	TQ5000-S	2-6
	TQ5000-S (w)	

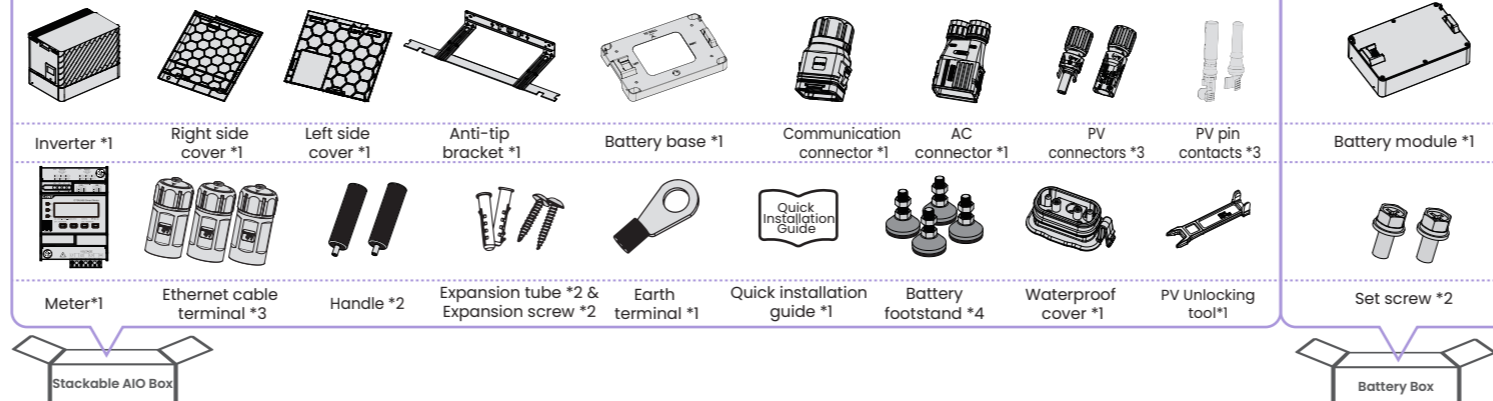
Note: For battery series selection, please consult local sales representative.
Inverter & Battery Series Matching Table



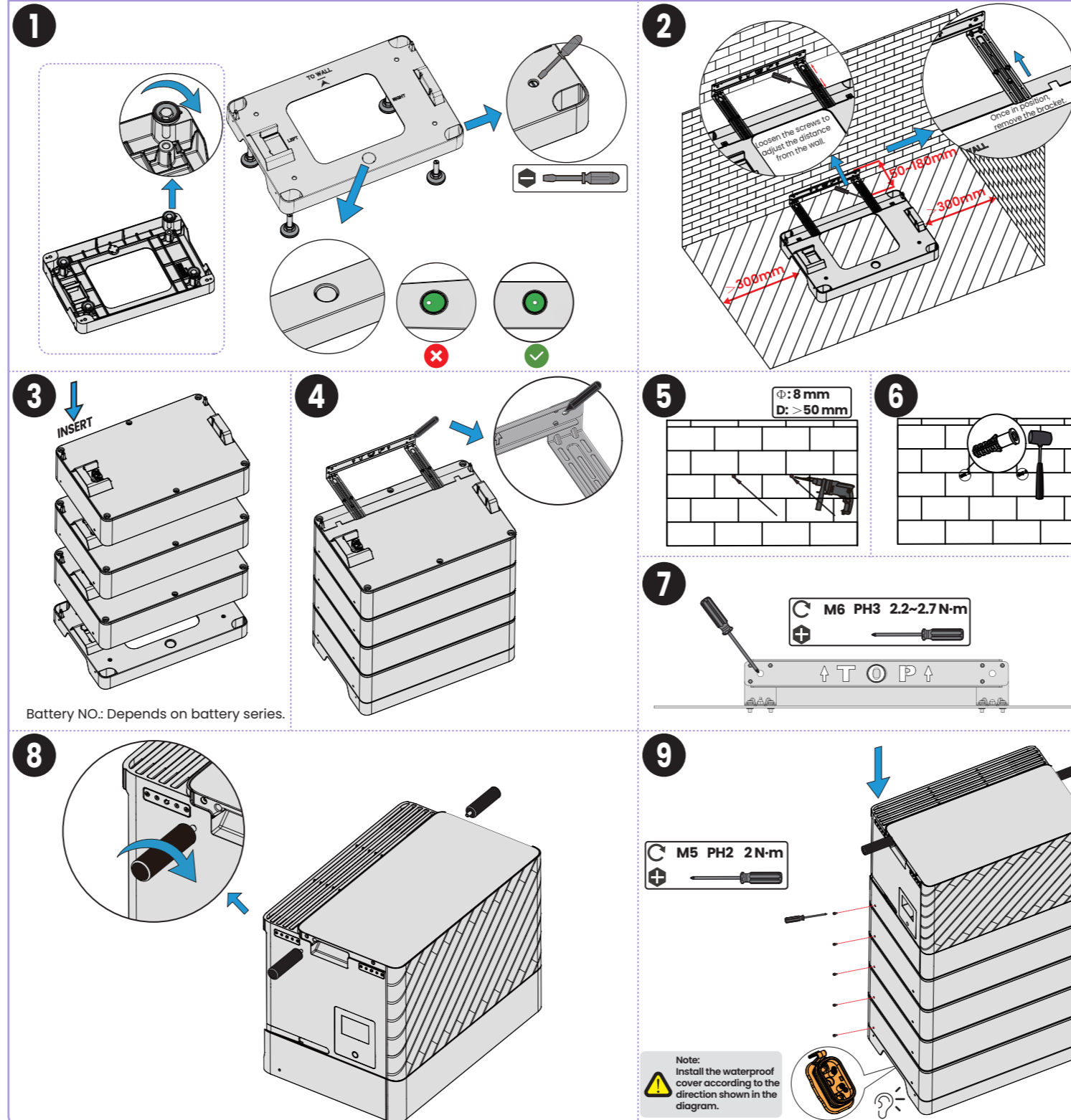
Note:
• All installation procedures must fully comply with all applicable regional and industry standards, covering cable selection, wiring, protective devices, and overall installation practices.



1. Packing List



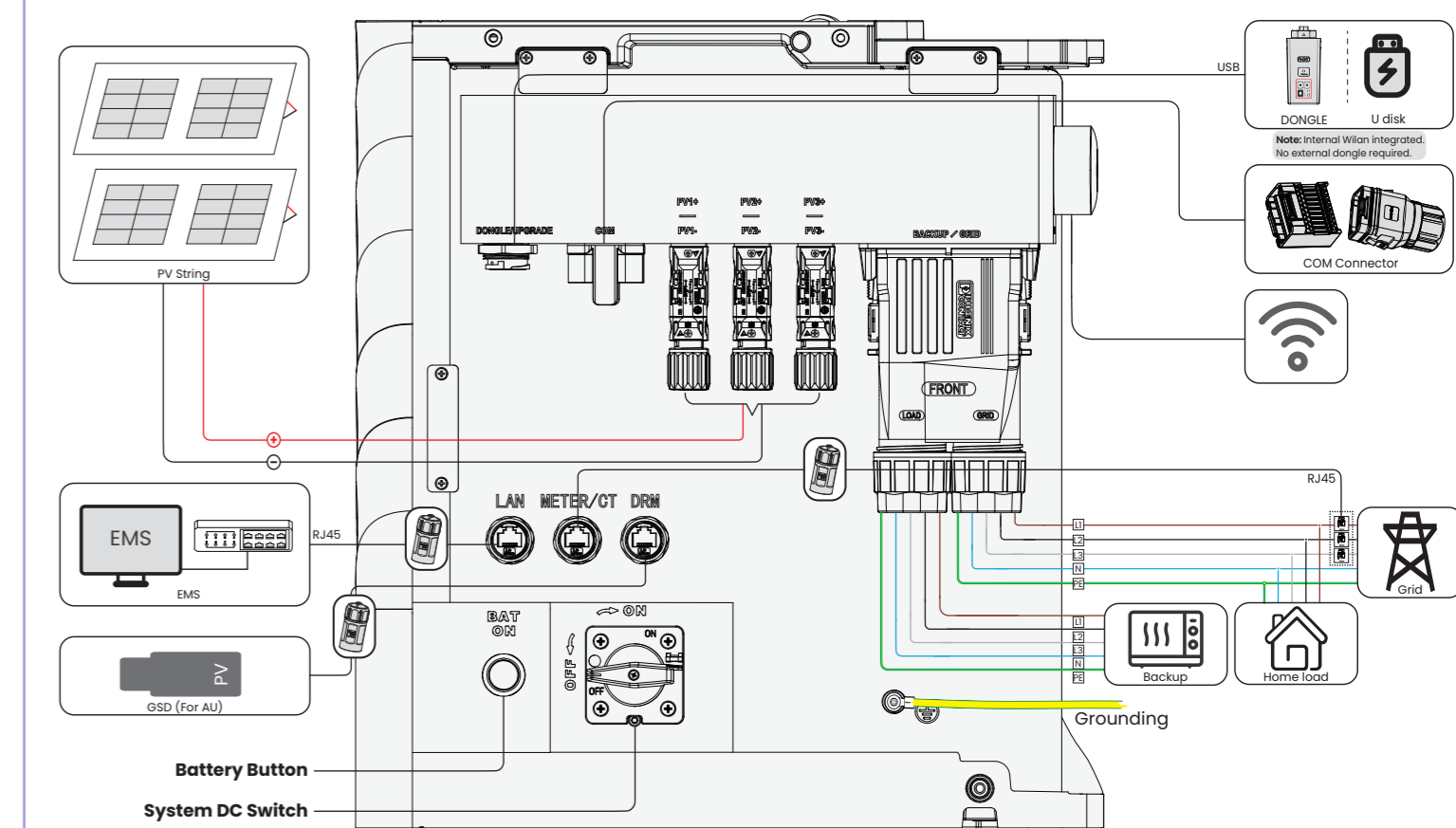
2. Installation Procedure



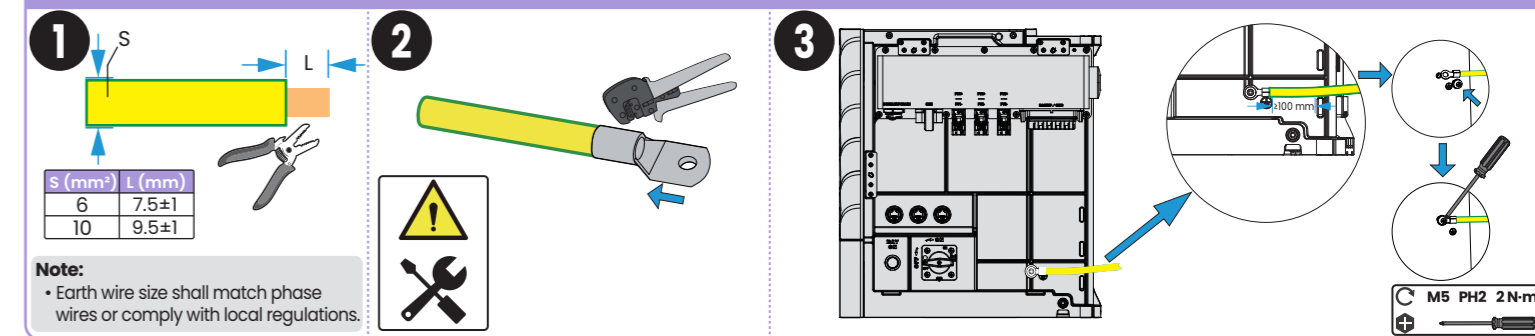
Battery NO.: Depends on battery series.

Note:
• Install the waterproof cover according to the direction shown in the diagram.

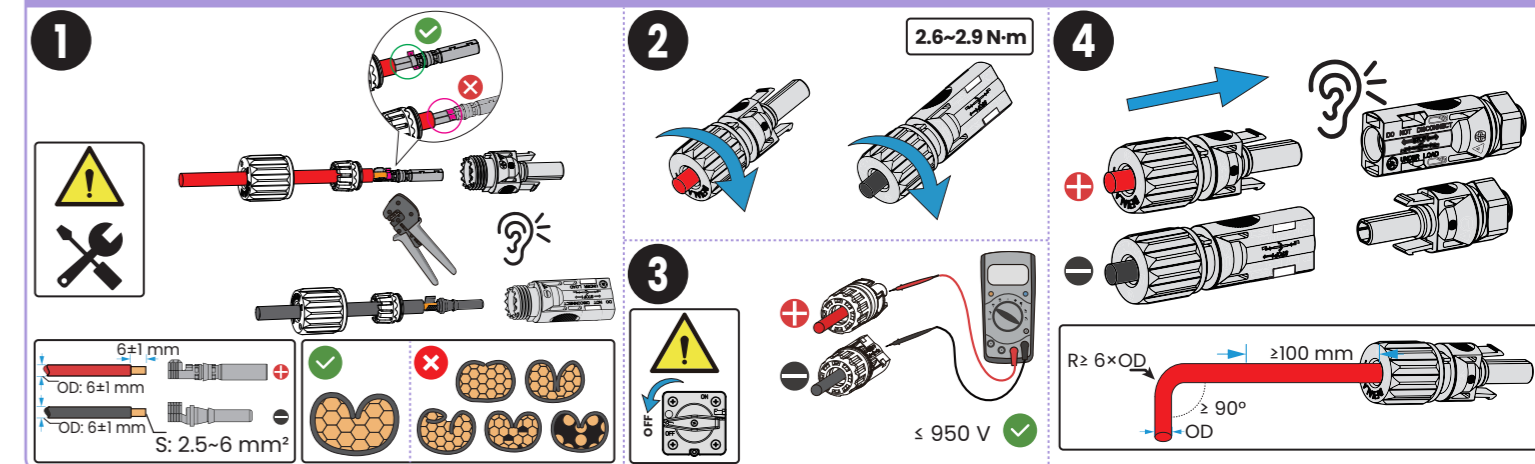
3. System Diagram



4. Grounding Connection



5. PV Connection



6. AC Connection

≤ 80 mm
 ≥ 100 mm
 $\geq 90^\circ$
 $\geq 18-20$ mm

OD (mm)	14-19	19-23.5	23.5-27.5
Sealing color	Black	Blue	Red

1 FRONT
2 P
3 GL1
4
5

Power (kW)	Conductor cross-section (mm ²)	Micro-Breaker (A)
5.0-15.0	10.0-16.0	63

Note: Stackable AIO has internal bypass 63A passthrough ability to support whole home backup solution. If the customer don't want to do any breaker upgrade, you can set the maximum input current through the app.

7. BACKUP Connection

Note: For countries such as Australia, New Zealand, South Africa, etc, please follow local wiring regulations. According to Australian safety requirements, the N cables of the GRID side and EPS side must be connected together. Otherwise, the EPS function will not work.

Note: For countries such as China, Germany, the Czech Republic, Italy, etc, please follow local wiring regulations. This diagram is an example for an application in which neutral is separated from the PE in the distribution box.

Whole Home Backup Wiring Diagram (Australia and New Zealand, etc)
Whole Home Backup Wiring Diagram (China, Germany, the Czech Republic, Italy, etc)

8. RJ45 Connection

1
2
3
4

OD: 5.5-6.5 mm

Type I
 Meter with 6 CT
 LAN METER/CT DRM

Type II
 Meter with 3 CT
 LAN METER/CT DRM

Note: "METER/CT" port is recommended.

3. Meter/CT 485A
 6. Meter/CT 485B

9. COM Connection

EMS
 Meter
 Shut Down

1. K1
 2. K2
 5. K3
 6. K4
 14. EMS 485A
 13. EMS 485B
 11. Meter 485A
 12. Meter 485B
 17. DI
 18. COM

OD: 5.5-6.5 mm

10. System Commissioning

System Start Up:
1 System DC Switch ON
2 Grid Switch ON
3 Home load Switch ON
4 PV Switch ON
5 Press & hold Battery button 3S

Covers Installation
Note: All cables must be neatly bundled and routed properly.
Note: After completing wire connections and system Commissioning, please install the covers on both sides.

System Shutdown:
1 Press & hold Battery button 5S
2 PV Switch OFF
3 Home load Switch OFF
4 Grid Switch OFF
5 System DC Switch OFF

Mobile APP
Web Management System

Please scan the QR Code and follow the steps below to download our latest multi-language User Manual/Quick Installation Guide:
 Scan the QR Code → Select your Language → Choose to download User Manual or Quick Installation Guide → Download