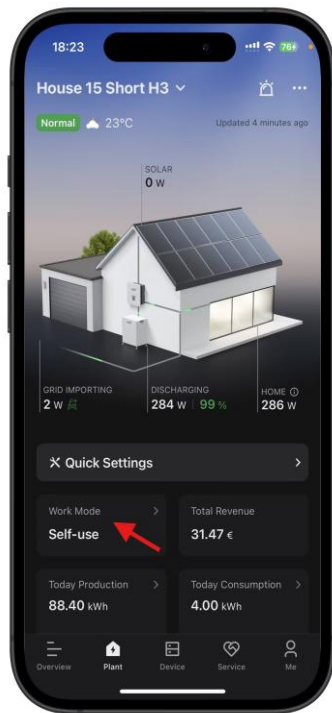

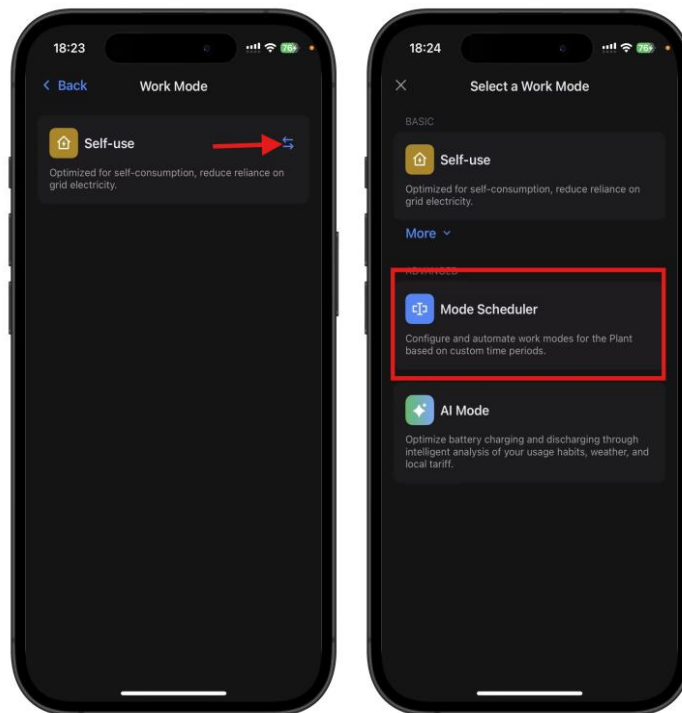


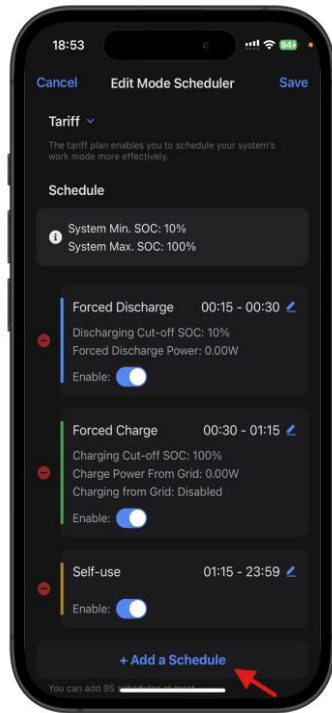
Step 1: Navigate to Plant Screen and tap **“Work Mode”**.




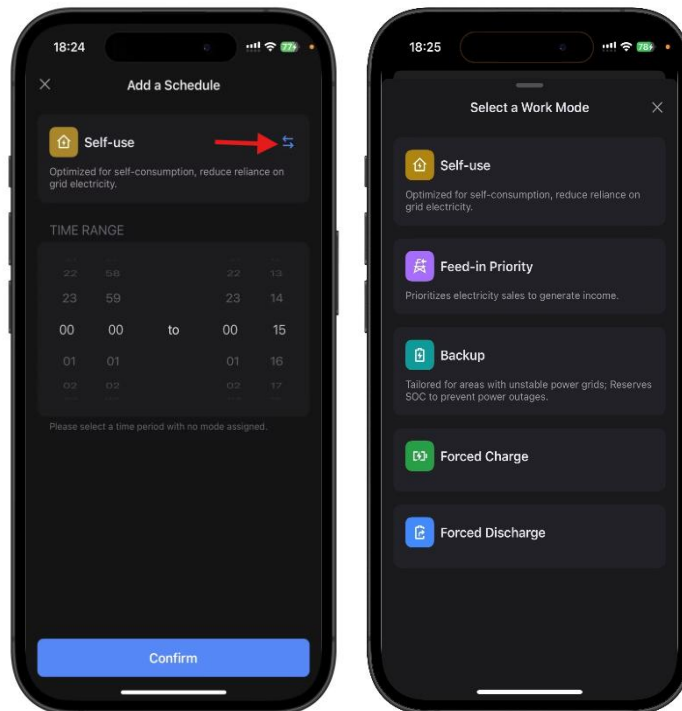
Step 2: Tap  and select **“Mode Scheduler”**.



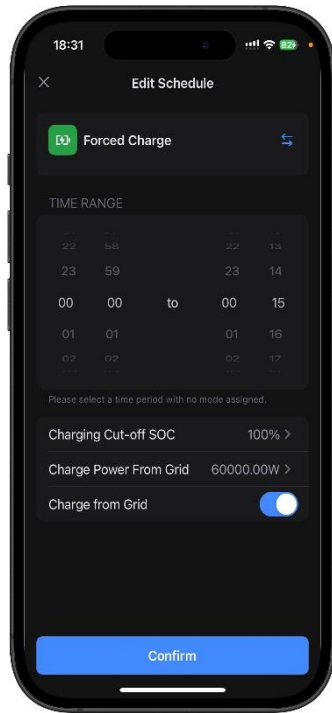
Step 3: Tap **“Add a Schedule”**.



Step 4: Tap “” and select “**Forced Charge**” or “**Forced Discharge**”.



Step 5: Set the time range and configure the parameters as needed, then tap “**Confirm**”.



Step 6: Review all schedules and tap **“Save”** to complete the process.

